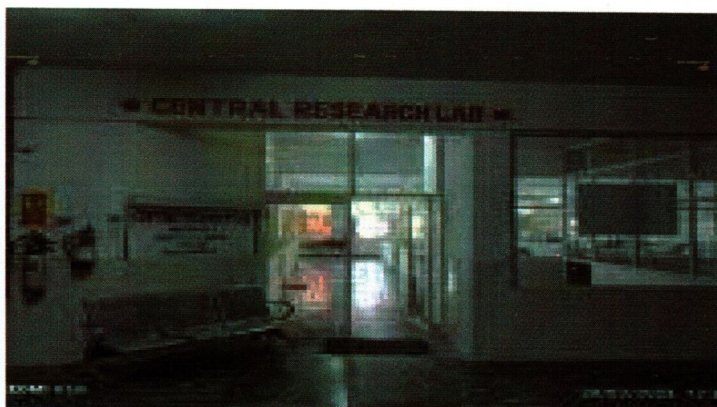


### 3.1.5 University facilities

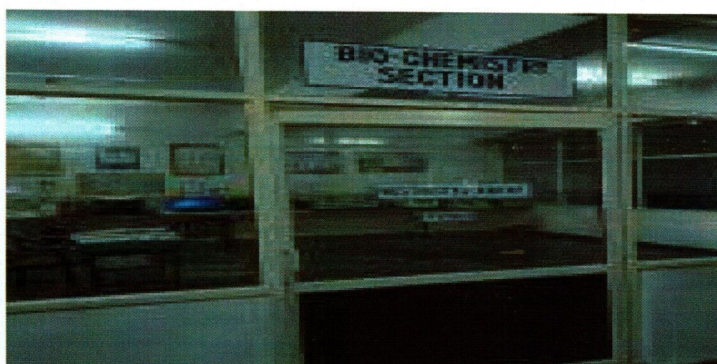
#### Central Research Laboratory

Central Research Lab (CRL) has equipment including Freezing Microtome, Gel Electrophoresis, IHC staining, PCR, Bio-safety cabinet, Cooling centrifuge, Normal Centrifuge, Autoclave and deep freezer ( $-20^{\circ}\text{C}$  &  $-80^{\circ}\text{C}$ ) molecular biology equipment, that has provided support to students and faculty members for conducting projects.

Entire spectrum of diagnostic services and research facilities are available through NABL accredited laboratory (Microbiology, Pathology, Biochemistry, Molecular diagnostics).



Central Research Lab



Biochemistry section of CRL Lab



**Registrar**  
**Malwanchal University**  
Indore (M.P.)

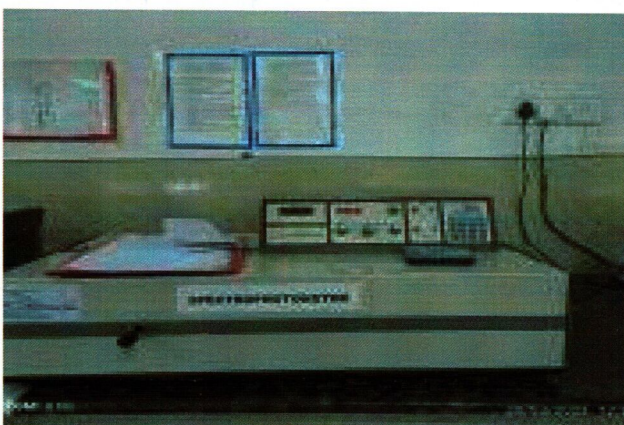




Electrophoresis Machine



Centrifuge Machine



Spectrophotometer Machine

## Anatomy Museum

### 1. Requirement of Museum in Anatomy.

- In gross anatomy museum
  - Specimen of different part of dissected human organ
  - In genetic model shows different gene normality and abnormality
  - Embryology model showing development of embryo from zygote formation to birth
- Radiology section
  - X-Ray
  - C.T. Scan



F.g. Showing – Gross museum of Anatomy.



F.g. Showing- Specimen of pelvis region.

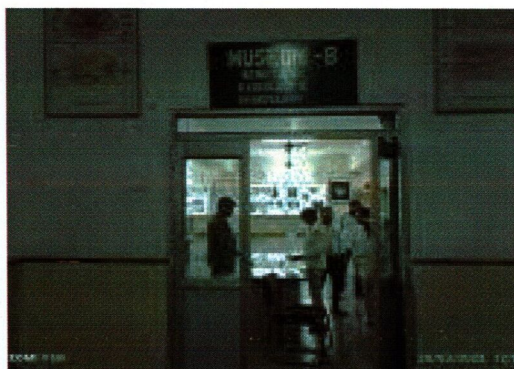




F.g. Showing- Specimen of lower limb



F.g. Showing- Specimen of  
Different gestation age of  
Embryo



F.g. Showing – Museum of Embryology  
Model, genetic model and Radiology



F.g. Showing- X-Ray and CT- Scan



F.g. Showing- Models of genetic



F.g. Showing- CT- Scan  
(Radiology)



**Registrar**  
**Malwanchal University**  
Indore (M.P.)